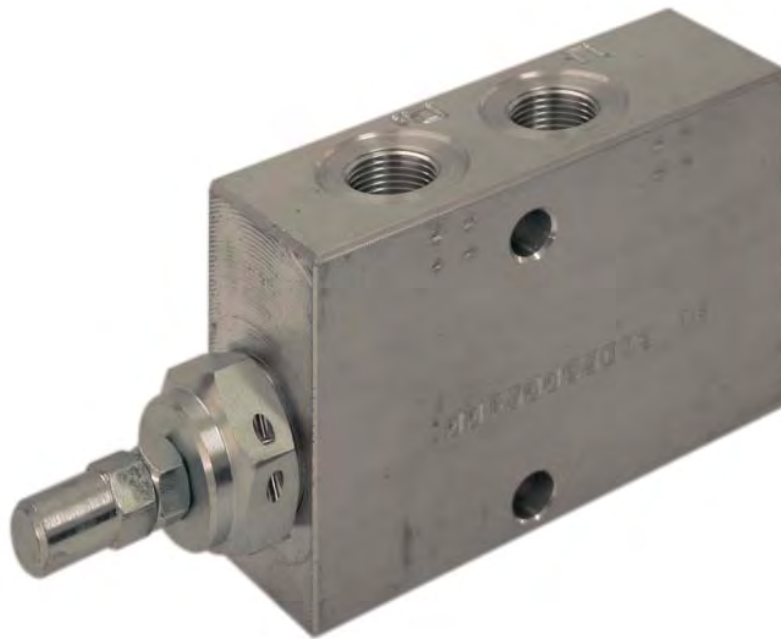


Druckminderventile – G 3/8" –

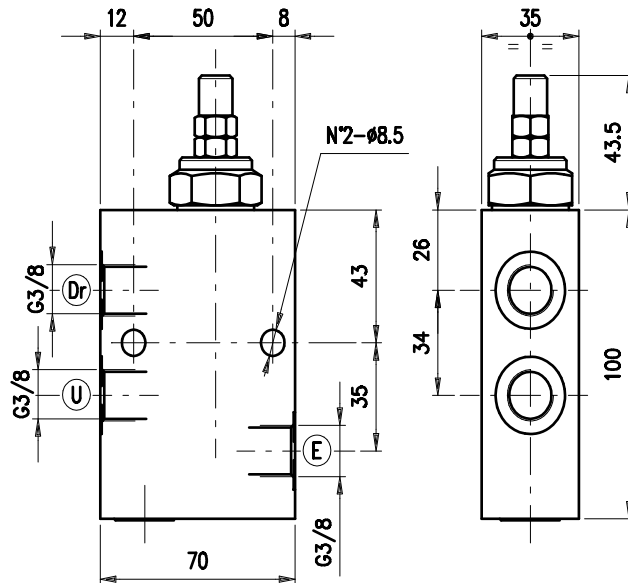


Bestellnr.	Typ	Bezeichnung	Gehäuse	max. Betriebsdruck bar	max. Durchfluss l/min	Code
230-0500-1875	VRPRL 38/TB.S	3/8"-Einstellb. 5-50bar-Hutmutter	Alu	210	20	1230021100
230-0500-1880	VRPRL 38/TB.V	3/8"-Einstellb. 5-50bar-Handrad				1230021101
230-0500-1885	VRPRL 38/TV.S	3/8"-Einstellb. 40-110bar-Hutmutter				1230021102
230-0500-1890	VRPRL 38/TV.V	3/8"-Einstellb. 40-110bar-Handrad				1230021103
230-0500-1895	VRPRL 38/TR.S.	3/8"-Einstellb. 180-350bar-Hutmutter				1230021106
230-0500-1900	VRPRL 38/TS.V	3/8"-Einstellb. 100-200bar-Handrad				1230021107
230-0500-1905	VRPRL 38/TS.S	3/8"-Einstellb. 100-200bar-Hutmutter				1230021112
230-0500-1910	VRPRL 38/TV.S/ac	3/8"-Einstellb. 40-100bar-Hutmutter	Stahl	350	20	1230022100
230-0500-1915	VRPRL 38/TB.S/ac	3/8"-Einstellb. 5-50bar-Hutmutter				1230022101
230-0500-1920	VRPRL 38/TV.V/ac	3/8"-Einstellb. 40-110bar-Handrad				1230022104
230-0500-1925	VRPRL 38/TV.PV/ac	3/8"-Einstellb. 40-110bar-Handrad				1230022105
230-0500-1930	VRPRL 38/TS.S/ac	3/8"-Einstellb. 100-200bar-Hutmutter				1230022106
230-0500-1935	VRPRL 38/TB.V/ac	3/8"-Einstellb. 5-50bar-Handrad				1230022107

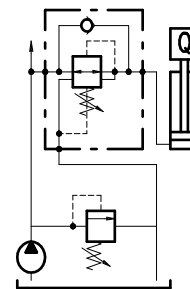
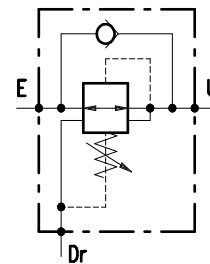
230-0500

PRESSURE REDUCING VALVES
VRPRL 38

• DIMENSIONS (mm)



• HYDRAULIC DIAGRAM



• DESCRIPTION

Direct control pressure adjustment valve with relieving and free return.

• OPERATION

Allows for free oil flow from E into U. When the pressure value set in U is achieved, the valve will shut the pass between E and U in order to maintain constant pressure in U. Should the pressure in U further exceed the setting value, the pass in E will shut and the connection in U will joint to Dr to relieve eventual pressure peaks. Single acting valve, allows for free oil return from U to E.

• PERFORMANCE

Maximum flow: 20 l/min.

Maximum Pressure:

- 210 bar (aluminium valve)
- 350 bar (steel valve)

Application range with standard springs:

- 5 + 50 bar (test setting: 40 bar at 5 l/min.)
- 40 + 110 bar (test setting: 90 bar at 5 l/min.)
- 100 + 200 bar (test setting: 160 bar at 5 l/min.)

To perform setting of the valve see the pressure drop/ flow diagram.

Oil leak in Dr: 20 cc per minute at 150 bar pressure and oil viscosity 46 cSt.

Working temperature:

- min. -25°C max. 90°C with standard BUNA N gaskets
- min. -20°C max. 120°C with optional VITON gaskets

• RECOMMENDATIONS:

Fluid: best use mineral oil with viscosity ranging between 10 and 200 cSt.

Filter: see page Z.9000.000.

Weight: 0.85 kg and 1.73 kg for aluminium and steel valves respectively.

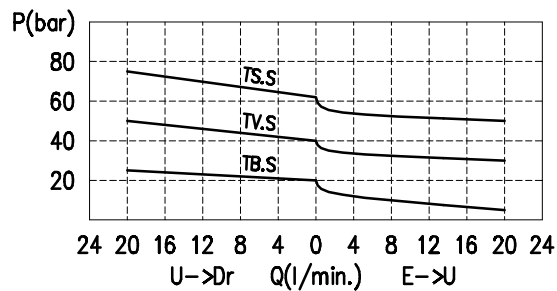
Material: internal components made out of high-grade steel duly treated and fabricated.

For more information please ask our technical office.

Variations and modifications of technical features and dimensions are reserved. **OLEOSTAR S.p.A.** also reserves the right to stop production of each and any model listed in the catalogue with no notice.

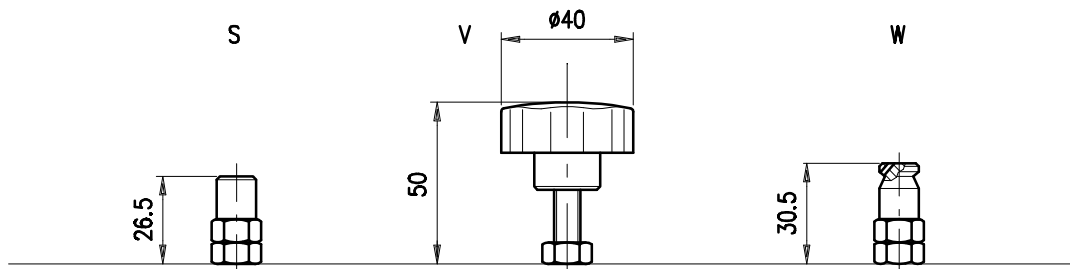
Copyrights on the text contained herein belong to **OLEOSTAR S.p.A.** . Partial and full reproductions or copies of this catalogue are forbidden.

• RATING DIAGRAMS



Oil viscosity 46 cSt

• ADJUSTMENTS



• CODE NUMBER

